

**George Washington Academy  
Request for Proposal (RFP)  
Rauland Telecenter U or Equivalent Intercom & Communications System**

**Issue Date:** April 15, 2025

**Proposal Due Date:** May 2, 2025, by 3:00 PM MST

**Submission Method:** Electronic submissions only to [jbentley@gwacademy.org](mailto:jbentley@gwacademy.org)

**Subject Line:** "Intercom System Proposal – [Your Company Name]"

---

## **1. Introduction**

George Washington Academy (GWA), located at 2277 S 3000 E, St. George, Utah 84790, is requesting proposals from qualified vendors to provide and install a school-wide intercom and communication system. The intent is to upgrade our current Bogen system with a modern IP-based platform such as the Rauland Telecenter U or an equivalent system that meets or exceeds the specifications outlined below.

---

## **2. Scope of Work**

The proposed system must:

- Replace the existing legacy Bogen system with a modern, IP-based communications solution.
- Integrate with approximately:
  - **50 Classrooms**
  - **1 Gymnasium**
  - **1 Library**
  - **1 Math Center**
  - **1 Workroom**
  - **1 Faculty Lounge**
  - **1 Cafeteria**

- **1 Nurse's Office**
  - **6 Front Office Locations**
  - **Outdoor Paging Zones**
  - Reuse existing speakers and cabling **where feasible**; replacements should be proposed only as necessary.
  - Provide two-way communication from classrooms to the front office via call buttons or similar devices.
  - Include emergency alerting, zone paging, bell scheduling, and administrative console control.
  - Support future expansion with a modular, scalable design.
  - Be installed, tested, and commissioned by the vendor, including staff training and documentation.
- 

### **3. Technical Requirements**

- IP-based system (e.g., Rauland Telecenter U or equivalent)
  - Minimum of 12 paging zones (expandable)
  - Web-based administrative interface
  - Emergency broadcast override functionality
  - Classroom-to-office communication buttons/switches
  - Compatible with existing speaker infrastructure when possible
  - Option for integration with visual messaging and access control systems
  - System-wide clock and bell scheduling capabilities
  - Future support and expandability, including outdoor zones
-

## **4. Vendor Responsibilities**

- Conduct site walkthroughs and confirm the compatibility of existing speakers.
  - Supply and install necessary gateways, cabling, and hardware.
  - Install and configure software and interface consoles.
  - Provide training to administrative and IT staff.
  - Submit all system documentation, including wiring diagrams and programming guides.
  - Provide post-installation support and warranty information.
- 

## **5. Submission Requirements**

Proposals must include:

- Executive Summary and understanding of the project
  - Detailed technical specifications of the proposed system
  - Project timeline from award to final commissioning
  - Breakdown of materials, labor, and total project cost
  - Warranty details and support terms
  - Three references from similar educational projects
  - Proof of manufacturer certification (if Rauland or equivalent system)
  - Signed acknowledgment of ability to meet the May 2, 2025, submission deadline
- 

## **6. Evaluation Criteria**

Proposals will be evaluated based on:

- Compliance with technical requirements
  - Cost-effectiveness
  - Ability to meet project timeline
  - Experience and references
  - Scalability and flexibility of the system
  - Support and warranty terms
- 

## 7. Timeline

- **RFP Issued:** April 15, 2025
  - **Proposal Deadline:** May 2, 2025 at 3:00 PM MST
  - **Vendor Selection:** May 15, 2025
  - **Target Installation Start:** Summer 2025
- 


## 8. Contact Information

### **RFP Contact:**

Jessica Bentley

George Washington Academy

 [jbentley@gwacademy.org](mailto:jbentley@gwacademy.org)

 (435) 673-2232

---

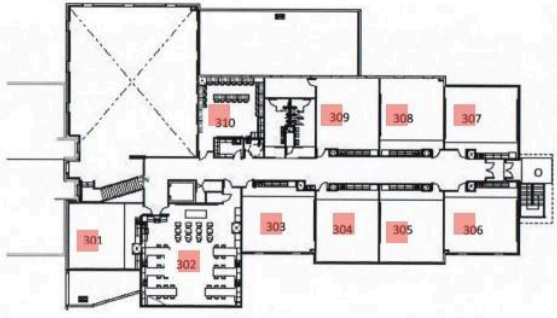
**We look forward to reviewing your proposal.**

Thank you for your interest in partnering with George Washington Academy.

**GWA Building Map**  
Updated 1-14-2025



1 GEORGE WASHINGTON ACADEMY - LEVEL 1  
SCALE: 1" = 20'



2 GEORGE WASHINGTON ACADEMY - LEVEL 2  
SCALE: 1" = 20'

Rack Here

